



ELAST PRO

FLEXIBLE HUMAN . ELASTIC WORLD

EVA Anti Slip
Shelf Liners / Mats



Shelf Liners

A liner is a piece of material that generally is placed on a floor or other flat surface. Mats serve a range of purpose including serving to clean items passed over it, protecting that which is above the Liner or an anti-vibration Liner, protecting that which is beneath the Liner, providing a regular or flat surface.

One of the common purposes of such Liners is to provide a thermal and physical barrier between that which is placed on the table, and the table itself-for instance, to stop hot objects from marring the table's finish.

Product Description

EVA (Ethylene-Vinyl Acetate) Anti Slip Shelf Liner is a multifunctional Liner, suitable for kitchen, bathroom, cabinet, refrigerator and other household places. It comes in various colours and it is easily washable. Resins used in manufacturing of ElastPro product are FDA , REACH and OEKO-TEX Standard-100 compliant.

You can put articles on the surface and prevent it from sliding. No matter how heavy the products are or what you put on it, will restore the original appearance. It is an eco-friendly, food grade, anti-bacterial, waterproof, transparent, crack resistant and non-toxic Liner. It is simple, durable, elegant, non-adhesive textured used in shelves, drawers, almirahs, table tops, refrigerators and multipurpose uses.



Product Types

Colour	Texture	Thickness In MM ±5%	Dimensions	Weight In KGS ± 5%
Natural White, German Design	Round Dots	1.0	20 MTS X 500 MM	7.5
Glossy White, German Design	Round Dots	1.0	20 MTS X 500 MM	7.5
Light Grey, German Design	Round Dots	1.0	20 MTS X 500 MM	7.5
Light Grey, German Design	Round Dots	1.0	20 MTS X 560 MM	8.4
Light Grey, German Design	Round Dots	1.0	20 MTS X 610 MM	9.1
Dark Grey, German Design	Round Dots	1.0	20 MTS X 500 MM	7.5
Dark Grey, German Design	Round Dots	1.0	20 MTS X 560 MM	8.4
Dark Grey, German Design	Round Dots	1.0	20 MTS X 610 MM	9.1
Metallic Grey, German Design	Round Dots	1.0	20 MTS X 500 MM	7.5
Metallic Grey, German Design	Round Dots	1.0	20 MTS X 560 MM	8.4
Metallic Grey, German Design	Round Dots	1.0	20 MTS X 610 MM	9.1
Metallic Grey, Check Design	Check Design	0.8	20 MTS X 500 MM	7.5
Metallic Grey, Check Design	Check Design	0.8	20 MTS X 560 MM	8.4
Metallic Grey, Check Design	Check Design	0.8	20 MTS X 610 MM	9.1
Pink, German Design	Round Dots	1.0	20 MTSX 500 MM	7.5
Light Blue, German Design	Round Dots	1.0	20 MTSX 500 MM	7.5
Banana Green, German Design	Round Dots	1.0	20 MTSX 500 MM	7.5

Colour	Texture	Thickness In MM ±5%	Dimensions	Weight In KGS ± 5%
Dark Blue, German Design	Round Dots	1.0	20 MTS X 500 MM	7.5
Orange, German Design	Round Dots	1.0	20 MTS X 500 MM	7.5
Yellow, German Design	Round Dots	1.0	20 MTS X 500 MM	7.5
Light Grey, German Design	Round Dots	1.5	20 MTS X 500 MM	12.5
Light Grey, German Design	Round Dots	1.5	20 MTS X 560 MM	14.0
Light Grey, German Design	Round Dots	1.5	20 MTS X 610 MM	15.2
Dark Grey, German Design	Round Dots	1.5	20 MTS X 500 MM	12.5
Dark Grey, German Design	Round Dots	1.5	20 MTS X 560 MM	14.0
Dark Grey, German Design	Round Dots	1.5	20 MTS X 610 MM	15.2
Metallic Grey, German Design	Round Dots	1.5	20 MTS X 500MM	12.5
Metallic Grey, German Design	Round Dots	1.5	20 MTS X 560MM	14.0
Metallic Grey, German Design	Round Dots	1.5	20 MTS X 610MM	15.2
Dark Grey	Square Dots	1.5	20 MTS X 500 MM	12.5
Dark Grey	Square Dots	1.5	20 MTS X 560 MM	14.0
Dark Grey	Square Dots	1.5	20 MTS X 610 MM	15.2
Multicolour, German Design	Round Dots	1.0	1.5 MTS X 450 MM X 12 Rolls / Box	6.3
Multicolour, German Design	Round Dots	1.0	1.5 MTS X 450 MM X 18 Rolls / Box	9.45
Multicolour, German Design	Round Dots	1.0	1.5 MTS X 450 MM X 30 Rolls / Box	15.5
Multicolour, German Design	Round Dots	1.0	5 MTS X 450 MM X 12 Rolls / Box	21.45
Multicolour, German Design	Round Dots	1.0	5 MTS X 450MM X 18 Rolls / Box	32.17

Product Details

GERMAN DESIGN, ROUND DOTS



Transparent



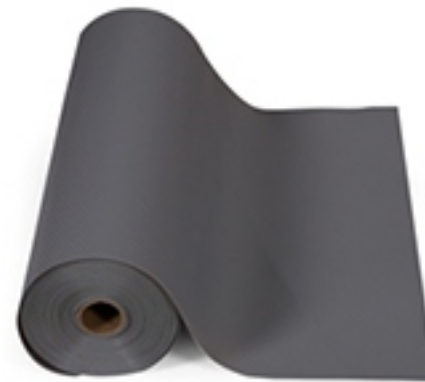
Natural white



Glossy white



Light grey



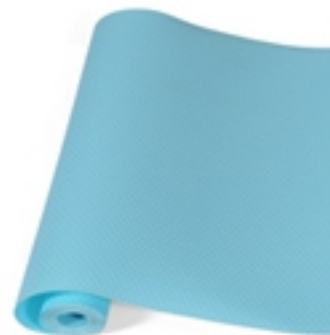
Dark grey



Metallic grey



Pink



Light blue



Banana green

Product Details

GERMAN DESIGN



Dark blue, Round Dots



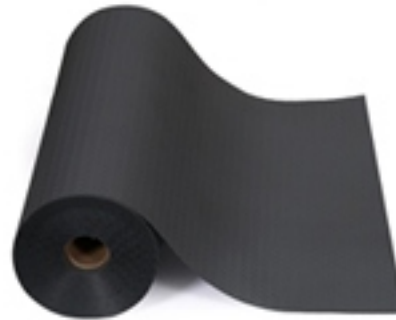
Orange, Round Dots



Yellow, Round Dots



Olive Green, Round Dots



Metallic grey, check design



Dark grey, square dots



Multicolour, German design



Fields of Application

- For use in kitchen drawers and shelves- protects furniture from water dripping and the anti-skid feature keeps the cutlery and utensils in place.
- For use in wardrobe and shelves-protects clothes from wood coating stain.
- For use in refrigerators shelves.
- For use to keep the shower soap bar from slipping off its designated place in the shower, which allows the soap to drain but keeps it in place.
- For use under pet dishes to keep them from sliding around
- Use them under rugs, or place a small piece under chair legs to prevent them from slipping across the floor.



Application Procedure

- Surfaces must be clean and dry.
- Simply cut with scissors to any shape or size as per your needs and place over the surface.

Advantages

- | | | | |
|-------------------|----------------|------------------|-----------------|
| ● Easily washable | ● Eco friendly | ● Anti bacterial | ● Waterproof |
| ● Crack resistant | ● Non toxic | ● Anti skid | ● Easy to apply |

Technical Datasheet

Product Name	Eva Sheet EVA Anti-Slip Shelf Liner
H.S.N. Code	39209999
Composition	100% EVA (Ethylene Vinyl Acetate)
Design	Variety of designs for your choice.
Size	Width upto 760 MM, Thickness 0.8 MM,0.9 MM,1.0 MM,1.2 MM and 1.5 MM (can be customized)
Delivery Time	Off the shelf
Features	Eco-friendly, food grade, skidproof, non-toxic, non-adhesive, mildewproof, waterproof, oil resistant, washable, easy to care. Can be easily cut into desired sizes as you like.
Care Instruction	Wash in warm,soapy water. This kind of material will not absorb liquids or odours, so can be easily cleaned.
Certificate	Certificate FDA , REACH and OEKO-TEX Standard-100.

Packaging

International standard export worthy packing.

ELAST PRO

FLEXIBLE HUMAN . ELASTIC WORLD

CONTACT INFORMATION:

Ankit Polymers

**Plot No. 83, Pace City1,
Sector 37, Gurugram-122001,
Haryana, INDIA**

Office: +91-124-4032165

Mobile: +91-9873507113, +91-9810396709, +91-9811693280

Email: ankitpolymers1997@gmail.com, info@elastpro.com

Website: www.elastpro.com

DISCLAIMER:

The technical information given in this publication is based on the present state of our best scientific and practical knowledge and is only responsible for the quality of the product. We are not responsible for results that may occur because the product is used other than advised and / or out of instructions regarding the place and method of use. This technical form is valid only till a new version is implemented and nullifies the old ones. Protect the spaces you love with shelf liners by Ankit Polymers.

Visit www.elastpro.com for more information.

